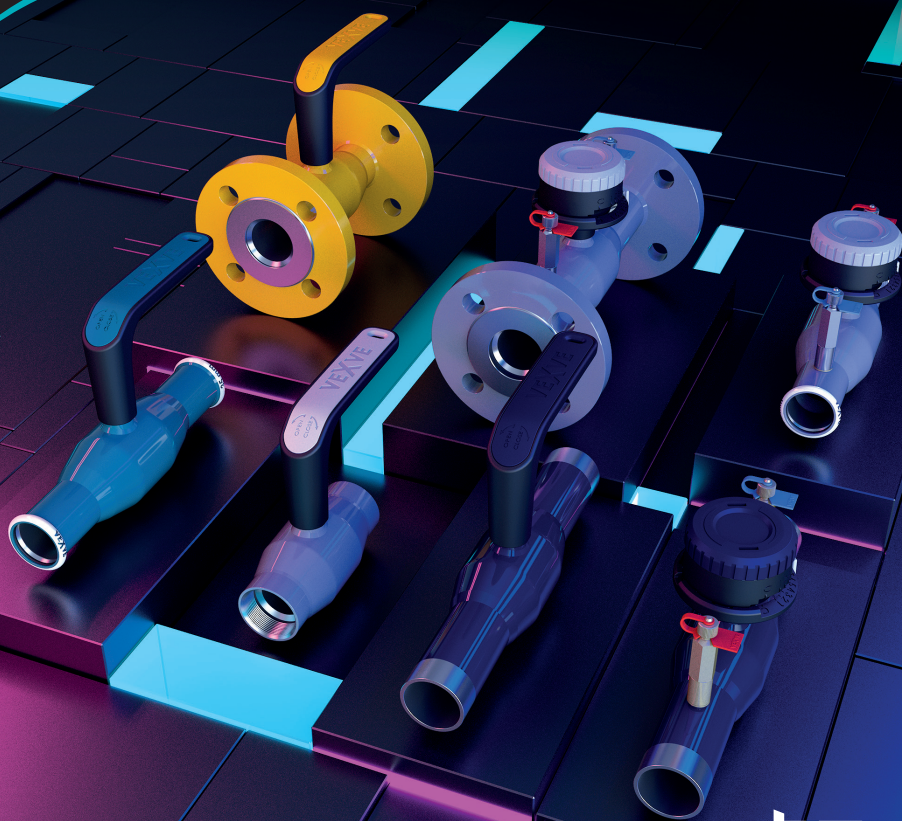


Vexve X – New generation of valves



New generation of valves

The new Vexve X range is designed for the optimal shut-off and balancing of both district energy networks and heating and cooling networks in buildings. The comprehensive range of valves includes steel and stainless steel shut-off and balancing valves with all of the most commonly used connection types (DN 10–50). All the stainless steel valves in the series have Finnish drinking water approval.



The ecological choice

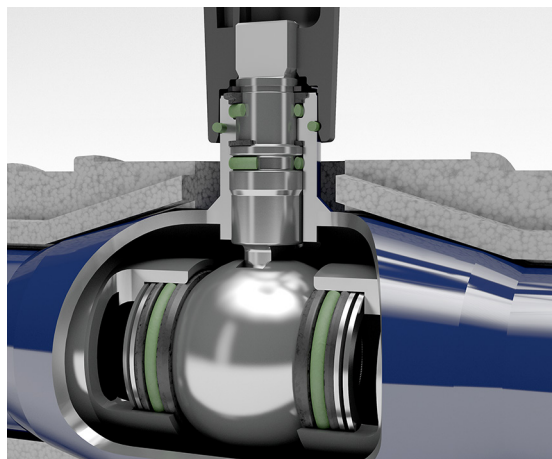
The high-quality Vexve X valves take the environment into account

- The products are made from high-quality European materials
- The handles are laser marked, reducing the use of chemicals
- The carbon footprint of our products has decreased by an average of 9%
- The valves are designed to last for the entire life cycle of the network

More energy-efficient solution

Our valves help you to reduce heat losses in the pipelines

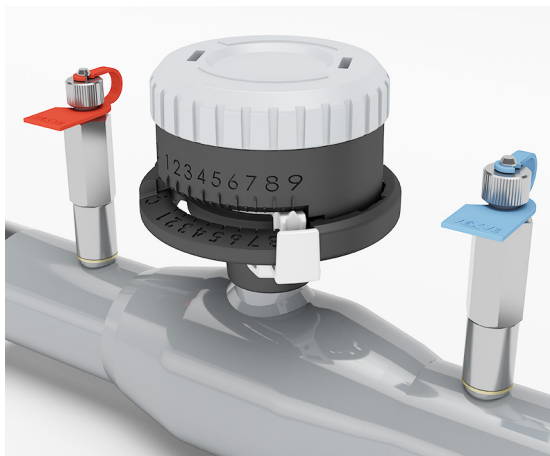
- The new stem structure cuts off the formation of a thermal bridge outside the insulation
- All of the valves have class A leakage rates
- Thanks to the new flow tube, the minimum pressure losses from balancing valves are 15% lower on average



Market-leading usability

Vexve X valves have an industrial design, with several new features to enhance the usability

- Low torque ensures easy operation
- The composite handle is easy to detach without tools
- The precision control knob allows the balancing valve to be locked to a set value, making the valve easy to adjust



Easy to install

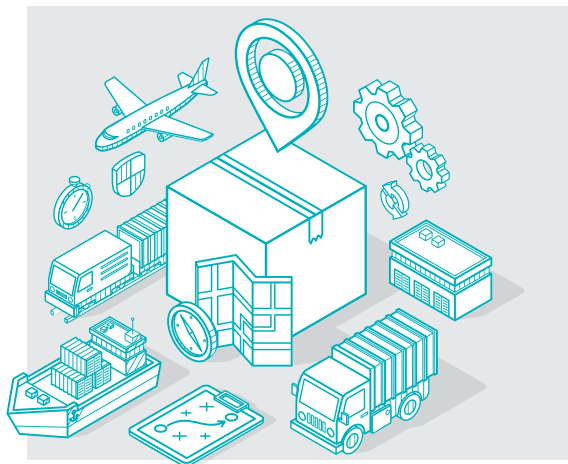
The valves are quick and easy to install

- Instructions are available via a QR code, and the valve information can also be read when the valve is insulated
- Our product selection includes ready-made insulation modules
- The self-sealing measuring blocks on the balancing valve ensure quick and easy measurement

Excellent availability

We aim to ensure swift deliveries and providing up-to-date information

- Technical support materials can be easily found from Vexve's webpage
- 3D models in the MagiCloud and CADs services
- Great availability through Vexve's wholesalers and distributors worldwide



INSPIRED BY YOUR FLOW



Vexve Oy

Pajakatu 11
38200 Sastamala
Finland

Riihenkalliontie 10
23800 Laitila
Finland

Tel. +358 10 734 0800
vexve.customer@vexve.com

www.vexve.com